

RESOLUTION 2015-001

A RESOLUTION DESIGNATING AND IDENTIFYING THE PAOLA PATHWAYS RECREATION TRAIL.

WHEREAS, the Governing Body of the City of Paola, Kansas adopted Ordinance No 3080 on January 27, 2015; and,

WHEREAS, Ordinance No 3080 provides for the rules and regulations governing the usage of the Paola Pathways Recreation Trail; and

WHEREAS, Ordinance No 3080 calls for the Paola Pathways Recreation Trail to be so designated by Resolution of the Governing Body of the City of Paola, Kansas;

NOW THEREFORE, BE IT RESOLVED by the governing Body of the City of Paola, Kansas, that said Paola Pathways Recreation Trail shall be hereby designated and identified on the following official maps:

Attachment A: Paola Pathways Recreation Trail – Wallace Park

Attachment B: Paola Pathways Recreation Trail – Lake Miola

BE IT FURTHER RESOLVED, that these official maps may be amended from time to time by Resolution of the Governing Body of the City of Paola, Kansas, and that these maps shall replace all previous versions, and that copies of said official maps shall be available in the office of the City Clerk.

PASSED, APPROVED AND ADOPTED this 27th day of January, 2015.

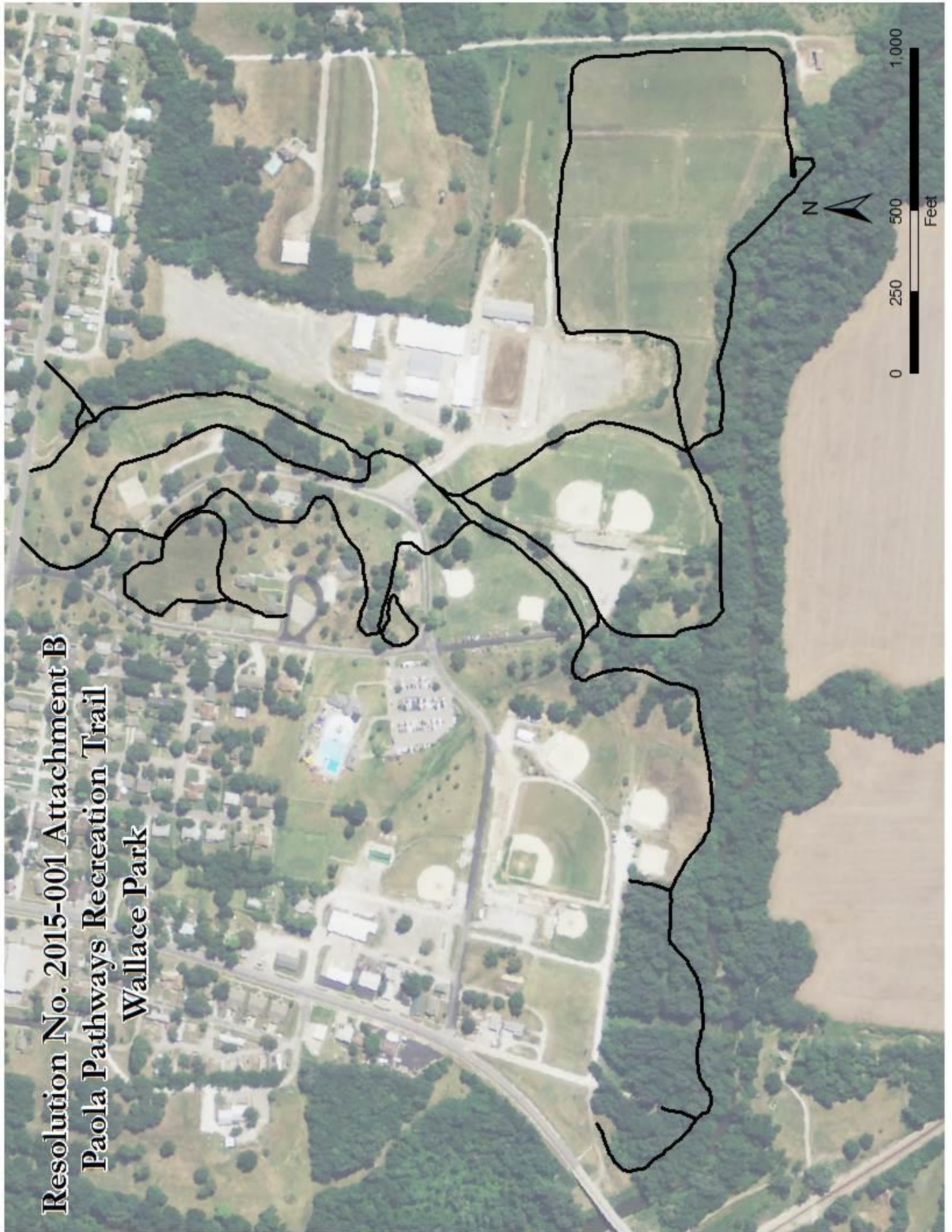
Artie Stuteville, Mayor

[Seal]

ATTEST:

Daniel G. Droste, City Clerk

Resolution No. 2015-001 Attachment B
Paola Pathways Recreation Trail
Wallace Park



Resolution No. 2015-001 Attachment B
Paola Pathways Recreation Trail
Lake Miola Trail

